

Forest Certification UPDATE



REVELSTOKE COMMUNITY FOREST CORPORATION

Revelstoke Community Forest Corporation (RCFC) woodlands operations are situated on Crown tenure in British Columbia, Canada managed as TFL 56. The TFL is 120,000 ha in area, of which 22,220 ha is in the timber harvest land base with an annual allowable cut (AAC) of 90,000 cubic meters. TFL 56 is located in the rugged Columbia Mountains one hour north of the City of Revelstoke in the Downie Creek and Goldstream River drainages. RCFC is a community owned forest company with objectives to manage for community values.

RCFC supplies logs to the open market and does not have any post-harvest processing facilities, nor do they procure any fibre. More information on RCFC is available on the web site: <http://rcfc.bc.ca/>

BACKGROUND

During the period of June 8 to June 10, 2015, Revelstoke Community Forest Corporation underwent a surveillance audit to the Sustainable Forestry Initiative (SFI®) Standard 2010-2014. The registration cycle is over 3 years with surveillance audits conducted annually. This report summarizes the audit process and results of the SAI Global re-registration audit.

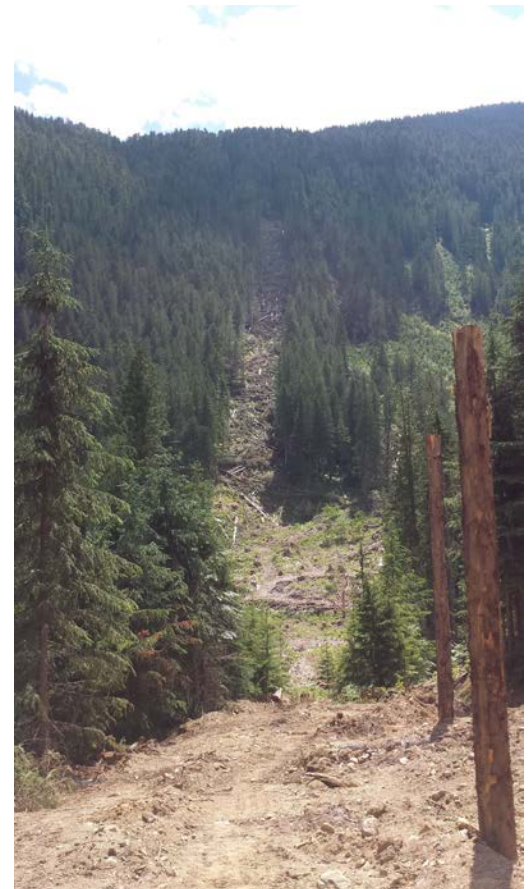
SCOPE OF CERTIFICATION

The Sustainable Forestry Initiative® Standard as it applies to forest land management including: harvest planning, harvesting, post harvest silviculture activities on TFL 56. SFIS Objectives covered are 1 to 7, 14 to 20.

EXECUTIVE SUMMARY

The SFI Program third-party surveillance audit was undertaken by SAI Global. SAI Global is an independent third party registrar that is accredited by the ANSI-ASQ National Accreditation Board (ANAB) for registrations to SFIS 2010-2014. This ensures the integrity and credibility of the audit process. An ANAB witness was present during this audit to assess conformance of SAI Global to auditing requirements.

The audit assessed active and completed harvest operations through interviews with Revelstoke Community Forest Corporation staff and contractors. The audit also assessed the



**Revelstoke
Community
Forest
Corporation**

SFIS and supporting management system documentation, records at the Revelstoke Community Forest Corporation office.

THE AUDITOR

The SAI Global auditor who performed the audit was Cindy Hutchison, RPF. The auditor is a Professional Forester.

KEY AREAS OF NON-CONFORMANCE

No areas of non-conformance were identified during the audit.

OPPORTUNITIES FOR IMPROVEMENT

Consider

- attending the SFI conference to get information on the new standard and meet with other program participants.
- clarifying the time frame for “periodic” reviews of legal requirements in the Operations Management System (OMS) Manual 3.2.
- reviewing the list of legal and other requirements in the OMS Manual, determine which apply, and if there are municipal or contractual agreements that are requirements.
- reviewing with Western Canada (WC) SIC how members can find the WC SIC annual report to SFI.
- a documented procedure for calculations required by SFI for their annual report.
- familiarization with best practices with working around active osprey nests, as required.
- noting raptor nests on the harvesting map, and indicating if discussions occurred in the inspection records.
- contractor review of BC Operational Health and Safety Regulation 5.10 workplace labels for decanted products.

EXCEPTIONAL PRACTICES

- Assisted migration trial is an impressive demonstration of support of research on climate change adaption.
- Demonstration of willingness to adapt alternative harvesting techniques (e.g. longline harvesting).
- Utilization of low value fibre at a loss (pulp) rather than leaving it in the woods or burning it.
- Transparency in operations (open-house participation) is beyond legal requirements.

EVIDENCE OF CONFORMITY

Evidence that was assessed to determine Revelstoke Community Forest Corporation conformity with the SFIS 2010-2014 standard appears below:

SFIS 2010-2014

Periodic Assessments

Major non-conformances	0
Minor non-conformances:	0
Opportunities for Improvement:	8
Exceptional Practices:	4

Major Non-Conformances

Pervasive or critical to the achievement of the SFI objectives.

All major non-conformances require an action plan to be implemented by the auditee within 90 days of an initial audit and subsequently 60 days or registration cannot be achieved/maintained

Minor Non-Conformances

Isolated incidents that are non-critical but must be addressed before the next surveillance audit to maintain compliance to the SFI standard.

Opportunity for Improvement

Are not non-conformances but are comments on specific areas where improvements can be made.

Exceptional Practices

Areas that are deemed to be best practices.



SFI-01 Forest Management Planning

Not audited.

SFI-02 Forest Productivity

Forest Stewardship Plan, Site Plans, Operations Management System, Standard Operating Procedures, Harvesting Plans and maps, TFL Annual Report, silviculture reports including planting and regeneration delay, compliance records, pre-work and inspection records, Fire Preparedness Plans, training records, interviews, and field inspections of cutblocks 205-1, 212-1, 205-3, 241-2, 124-2.

SFI-03 Protection and Maintenance of Water Resources

Not audited in the office. Interviews and field inspections of cutblocks 205-1, 212-1, 205-3, 241-2, 124-2 and the assisted migration trial.

SFI-04 Conservation of Biological Diversity

Not audited in the office. Interviews and field inspections of cutblocks 205-1, 212-1, 205-3, 241-2, 124-2 and the assisted migration trial.

SFI-05 Management of Visual Quality and Recreational Benefits

Forest Stewardship Plan and legislated requirements, TFL 56 Annual Report, SFI Annual Report, Standard Operating Procedures, Site Plans, Harvesting Plans and maps, pre-work and inspection records, training records, interviews, and field inspections of cutblocks 205-1, 212-1, 205-3, 241-2, 124-2.

SFI-06 Protection of Special Sites

Forest Stewardship Plan and legislated requirements, Standard Operating Procedures, Site Plans, Harvesting Plans and maps, pre-work and inspection records, training records, interviews.

SFI-07 Efficient Use of Forest Resources

Forest Stewardship Plan and legislated requirements, Operations Management System, Harvesting Contracts, Standard Operating Procedures, Site Plans, Harvesting Plans and maps, pre-work and inspection records, training records, interviews, and field inspections of cutblocks 205-1, 212-1, 205-3, 241-2, 124-2.

SFI-14 Legal and Regulatory Compliance

Forest Stewardship Plan and legislated requirements, Operations Management System, Management review meeting minutes, pre-work and inspection records, internal audit records, 2014 and 2015 Government Compliance and Enforcement History Report, SFM Policy, interviews, and field inspections of cutblocks 205-1, 212-1, 205-3, 241-2, 124-2.

SFI-15 Forestry Research & Technology

Not audited in the office. Interviews and field inspections of cutblocks 205-1, 212-1, 205-3, 241-2, 124-2 and the assisted migration trial.

SFI-16 Training and Education

Not audited in the office. Interviews and field inspections of cutblocks 205-1, 212-1, 205-3, 241-2, 124-2 and the assisted migration trial.

SFI-17 Community Involvement in the Practice of Sustainable Forestry

Performance Measures 17.1 and 17.2 not audited. Performance Measure 17.3: Western Canada SIC meeting minutes, web site, and progress report.

SFI-18 Public Land Management Responsibilities

Standard Operating Procedures, Operations Management System, First Nations and stakeholder correspondence files/records, information on public open house.

SFI-19 Communications and Public Reporting

SFI website, email from SFI, records of SFI annual reports, interviews.

SFI-20 Management Review and Continual Improvement

Management review meeting minutes, Operations Management System, interviews and field inspections of cutblocks 205-1, 212-1, 205-3, 241-2, 124-2 and the assisted migration trial.



SAI Global forestry specialist group registers/certifies forest companies to ISO 14001, OHSAS 18001, CSA Z809 and CSA Z804 SFM, SFIS, SFI CoC, PEFC CoC, FSC FM and FSC CoC. The group, led by Sylvain Frappier, Technical Manager - Forestry, consists of a highly qualified team of professional foresters, technical and industry experts. Contact certification.americas@saiglobal.com for more information.

Company Contact:

Mike Copperthwaite, RPF
Revelstoke Community Forest Corporation
200-103 2nd Street East, Box 3199, Revelstoke, British Columbia, V0E 2S0
(250) 837-5329

This report may only be reproduced by the intended client, with the express consent of SAI Global. Information in this issue is of a general nature with respect to audit findings and is not intended to be acted upon without appropriate professional advice.