

# Forest Certification UPDATE



## REVELSTOKE COMMUNITY FOREST CORPORATION

Revelstoke Community Forest Corporation (RCFC) woodlands operations are situated on Crown tenure in British Columbia, Canada managed as TFL 56. The TFL is 120,000 ha in area, of which 22,220 ha is in the timber harvest land base with an annual allowable cut (AAC) of 90,000 cubic meters. TFL 56 is located in the rugged Columbia Mountains one hour north of the City of Revelstoke in the Downie Creek and Goldstream River drainages. RCFC is a community owned forest company with objectives to manage for community values.

RCFC supplies logs to the open market and does not have any post-harvest processing facilities, nor do they procure any fibre. More information on RCFC is available on the web site: <http://rcfc.bc.ca/>

### BACKGROUND

During the period of June 3 to June 6, 2014, Revelstoke Community Forest Corporation underwent a re-registration audit to the Sustainable Forestry Initiative (SFI®) Standard 2010-2014. The registration cycle is over 3 years with surveillance audits conducted annually. This report summarizes the audit process and results of the SAI Global re-registration audit.

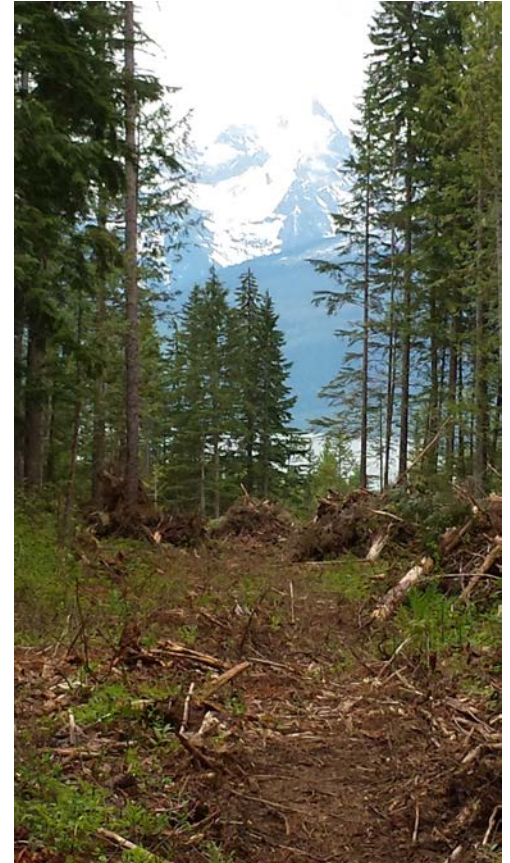
### SCOPE OF CERTIFICATION

The Sustainable Forestry Initiative® Standard as it applies to forest land management including: harvest planning, harvesting, post harvest silviculture activities on TFL 56. SFIS Objectives covered are 1 to 7, 14 to 20.

### EXECUTIVE SUMMARY

The SFI Program third-party re-registration audit was undertaken by SAI Global. SAI Global is an independent third party registrar that is accredited by the ANSI-ASQ National Accreditation Board (ANAB) for registrations to SFIS 2010-2014. This ensures the integrity and credibility of the audit process.

The audit assessed active and completed harvest operations through interviews with Revelstoke Community Forest Corporation staff and contractors. The audit also assessed the SFIS and supporting management system documentation, records at the Revelstoke Community Forest Corporation office. Additionally, a site visit was made and interviews were conducted



**Revelstoke  
Community  
Forest  
Corporation**

at the Mountain Caribou Rearing in the Wild conservation and research project.

### THE AUDITOR

The SAI Global auditor who performed the audit was Cindy Hutchison, RPF. The auditor is a Professional Forester.

### KEY AREAS OF NON-CONFORMANCE

No areas of non-conformance were identified during the audit.

### OPPORTUNITIES FOR IMPROVEMENT

Consider

- a service to get notification when Federal legislation is updated.
- reviewing applicable BC Fuel Guidelines with operators as part of SFI training.
- reviewing fire extinguisher maintenance requirements with operators (e.g. aligned with insurance requirements).
- follow-through on WHMIS training to ensure frequency is aligned with legal requirements.
- adding year and month of activities to the SFI evidence package to clarify what is current.
- having WC SIC upload reports to SFI to the member's only section of the website so they are easily available to members.
- resubmission of 2013 SFI report with corrected information as information did not save correctly.

### EXCEPTIONAL PRACTICES

- Partial harvesting areas are managed for forest productivity beyond the declaration of Free Growing.
- Ensuring that road required by Canadian Mountain Holidays was fixed in timely manner, even though it was out of the area of responsibility of RCFC, demonstrates and understanding of RCFC social licence.
- Communications with Downie RV water licence holder was beyond the legislative requirements demonstrates and understanding of RCFC social licence.
- Large financial and in-kind contributions to Mountain Caribou Rearing in the Wild conservation and research project.

### EVIDENCE OF CONFORMITY

Evidence that was assessed to determine Revelstoke Community Forest Corporation conformity with the SFIS 2010-2014 standard appears below:

#### SFI-01 Forest Management Planning

Forest Stewardship Plan and legislated requirements, TFL 56 Management Plan, Management Plan Analysis Report and Information

#### SFIS 2010-2014 Periodic Assessments

Major non-conformances	0
Minor non-conformances:	0
Opportunities for Improvement:	7
Exceptional Practices:	4

#### Major Non-Conformances

Pervasive or critical to the achievement of the SFI objectives.

All major non-conformances require an action plan to be implemented by the auditee within 90 days of an initial audit and subsequently 60 days or registration cannot be achieved/maintained

#### Minor Non-Conformances

Isolated incidents that are non-critical but must be addressed before the next surveillance audit to maintain compliance to the SFI standard.

#### Opportunity for Improvement

Are not non-conformances but are comments on specific areas where improvements can be made.

#### Exceptional Practices

Areas that are deemed to be best practices.



Package, TFL AAC Rationale.

**SFI-02 Forest Productivity**

Forest Stewardship Plan, Site Plans, Operations Management System, Standard Operating Procedures, Harvesting Plans and maps, TFL Annual Report, silviculture reports including planting and regeneration delay, compliance records, pre-work and inspection records, Fire Preparedness Plans, training records, interviews, and field inspections of the following cutblocks: 279-1, 236-1, 241-1, 228-1, 205-2.

**SFI-03 Protection and Maintenance of Water Resources**

Forest Stewardship Plan and legislated requirements, Operations Management System, Standard Operating Procedures, Harvesting Contracts, Site Plans, Harvesting Plans and maps, pre-work and inspection records, training records, interviews, and field inspections of the following cutblocks: 279-1, 236-1, 241-1, 228-1, 205-2.

**SFI-04 Conservation of Biological Diversity**

Forest Stewardship Plan and legislated requirements, Operations Management System, Standard Operating Procedures, Training Manual Species at Risk/Endangered Species Lists and pictures, Training Manual Invasive Plants list and pictures, Mountain Caribou Management Sighting Form, training records, interviews and field inspections at the Mountain Caribou Rearing in the Wild conservation and research site and the following cutblocks: 279-1, 236-1, 241-1, 228-1, 205-2.

**SFI-05 Management of Visual Quality and Recreational Benefits**

Forest Stewardship Plan and legislated requirements, TFL 56 Annual Report, Standard Operating Procedures, Harvesting Contracts, Site Plans, Harvesting Plans and maps, pre-work and inspection records, training records, interviews, and field inspections a proposed recreation site on Revelstoke Lake and review of following cutblocks: 228-1, 205-2.

**SFI-06 Protection of Special Sites**

Forest Stewardship Plan and legislated requirements, Standard Operating Procedures, Site Plans, Harvesting Plans and maps, pre-work and inspection records, training records, interviews.

**SFI-07 Efficient Use of Forest Resources**

Forest Stewardship Plan and legislated requirements, Operations Management System, Harvesting Contracts, Standard Operating Procedures, Site Plans, Harvesting Plans and maps, pre-work and inspection records, training records, interviews, and field inspections of following cutblocks: 279-1, 236-1, 241-1, 228-1, 205-2.

**SFI-14 Legal and Regulatory Compliance**

Forest Stewardship Plan and legislated requirements, Operations Management System, Management review meeting minutes, pre-work and inspection records, internal audit records, 2013 and 2014 Government Compliance and Enforcement Inspection Record, SFM Policy, interviews, and field inspections of following cutblocks: 279-1, 236-1, 241-1, 228-1, 205-2.

**SFI-15 Forestry Research & Technology**

Field review of Revelstoke Mountain Caribou Rearing in the Wild project (<http://rcrw.ca>), Forest Stewardship Plan and legislated requirements, Operations Management System, Standard Operating Procedures.

**SFI-16 Training and Education**

Forest Stewardship Plan and legislated requirements, Standard Operating Procedures, Site Plans, Harvesting Plans and maps, pre-work and inspection records, Contractor Information binder, training records, interviews and field inspections of following cutblocks: 279-1, 236-1, 241-1, 228-1, 205-2.

**SFI-17 Community Involvement in the Practice of Sustainable Forestry**

Forest Stewardship Plan and legislated requirements, Standard Operating Procedures, RCFC Annual Report, Operations Management System communication forms, Site Plans, Harvesting Plans and maps, pre-work and inspection records, WC SIC website, SFI evidence package, interviews.



**SFI-18 Public Land Management Responsibilities**

Forest Stewardship Plan and legislated requirements, Standard Operating Procedures, Operations Management System, First Nations and stakeholder and external correspondence files/records, interviews with First Nations' band member.

**SFI-19 Communications and Public Reporting**

SFI website, email from SFI, records of SFI annual reports, interviews.

**SFI-20 Management Review and Continual Improvement**

Management review meeting minutes, Operations Management System, interviews and field inspections of following cutblocks: 279-1, 236-1, 241-1, 228-1, 205-2.



Revelstoke Mountain Caribou Rearing in the Wild: <http://rcrw.ca/>

SAI Global forestry specialist group registers/certifies forest companies to ISO 14001, OHSAS 18001, CSA Z809 and CSA Z804 SFM, SFIS, SFI CoC, PEFC CoC, FSC FM and FSC CoC. The group, led by Sylvain Frappier, Technical Manager - Forestry, consists of a highly qualified team of professional foresters, technical and industry experts. Contact [certification.americas@saiglobal.com](mailto:certification.americas@saiglobal.com) for more information.

Company Contact:

Mike Copperthwaite, RPF

Revelstoke Community Forest Corporation

200-103 2<sup>nd</sup> Street East, Box 3199, Revelstoke, British Columbia, V0E 2S0

(250) 837-5329

*This report may only be reproduced by the intended client, with the express consent of SAI Global. Information in this issue is of a general nature with respect to audit findings and is not intended to be acted upon without appropriate professional advice.*